

BerryPEP

Product Technical Report



INCI name: Panax Ginseng Berry Extract, Lactobacillus/Ginseng Root Ferment Filtrate

BerryPEP



Introduction of Our Peptide Products.

BerryPEP

INCI Name : Panax Ginseng Berry Extract, Lactobacillus/Ginseng Root Ferment Filtrate



Scientific name	Panax ginseng C. A. Meyer
Kingdom	Plantae
Division	Anthophyta
Class	Dicotyledoneae
Order	Umbelliferae
Distribution area	Korea, China, Russia
Habitat/Home	It is native to an area ranging from 30° to 48° North latitude, and native to three areas; Korea (33.7° to 43.21°), Manchuria (43° to 47°) in China, and the Siberian Maritime Territory (40° to 48°).
Size	Height 60cm
Classification of domestic varieties and overseas varieties	Korean ginseng is called Goryeo (Korean) ginseng and written in '蔘'. Foreign ginseng is written into '參'. For example, American ginseng (Panax quinquefolium, 花旗參), Japanese ginseng (Panax japonicum, 東洋參), Chinese ginseng (Panax notoginseng, 關東參)

Content	100%	pH	5.5 ~ 7.5
Appearance	Clear yellowsh Liquid	Specific Gravity	0.98 - 1.20
Odor	Characteristic	Preservative	Free

Introduction of Our Peptide Product

BerryPEP

Ginseng Berry

Keywords “Fruit of the youngest time”, “only once”, “rarity”, “ginsenoside”, “modern elixir plant”

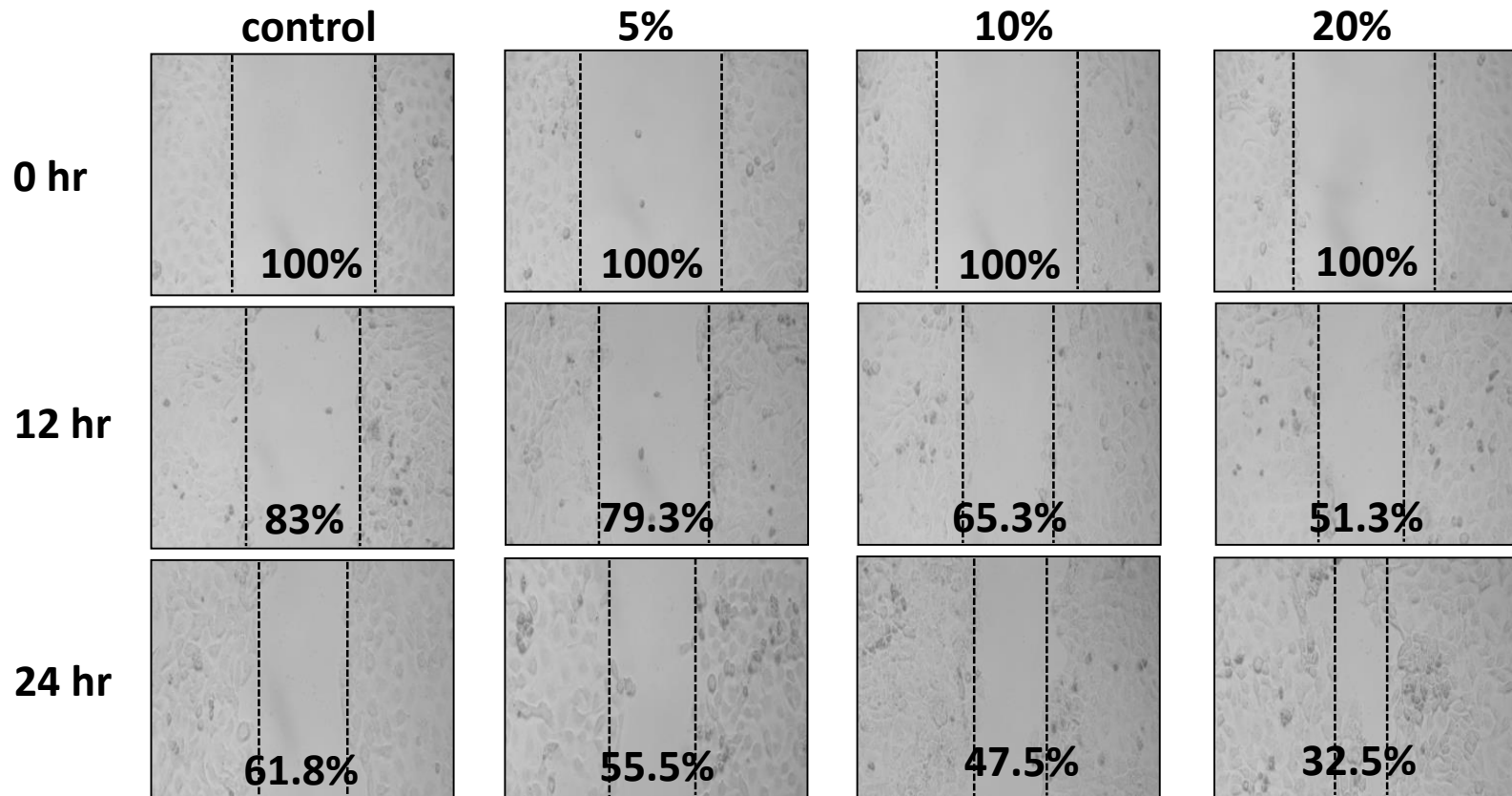


- A product made by separating and fermenting peptide, a functional ingredient, from Ginseng Berry
 - Ginseng Berry, which is borne only once every four years, is rich in essential nutrients such as saponin and peptides.
 - Ginseng contains about two to three times more active ingredients in its fruits than the roots.
 - Developed as a low-irritating material specialized in various cosmetic formulations by multiplying the efficacy by fermenting highly functional lactic acid bacteria.
 - A product that is especially effective in anti-wrinkle and anti-aging and that can be applied to any formulation
 - Application : Anti-Oxidant, Anti-aging
-

Introduction of Our Peptide Product

BerryPEP : Cell regeneration

Results: BerryPPEP is artificially scared and rapidly recovered (reduced free space) depending on concentration when processing skin cells (HACAT, Keratinocyte)



Introduction of Our Peptide Product

BerryPEP : Reference

Effects of Korean ginseng berry on skin antipigmentation and antiaging via FoxO3a activation

J Ginseng Res 2017;41:277e283

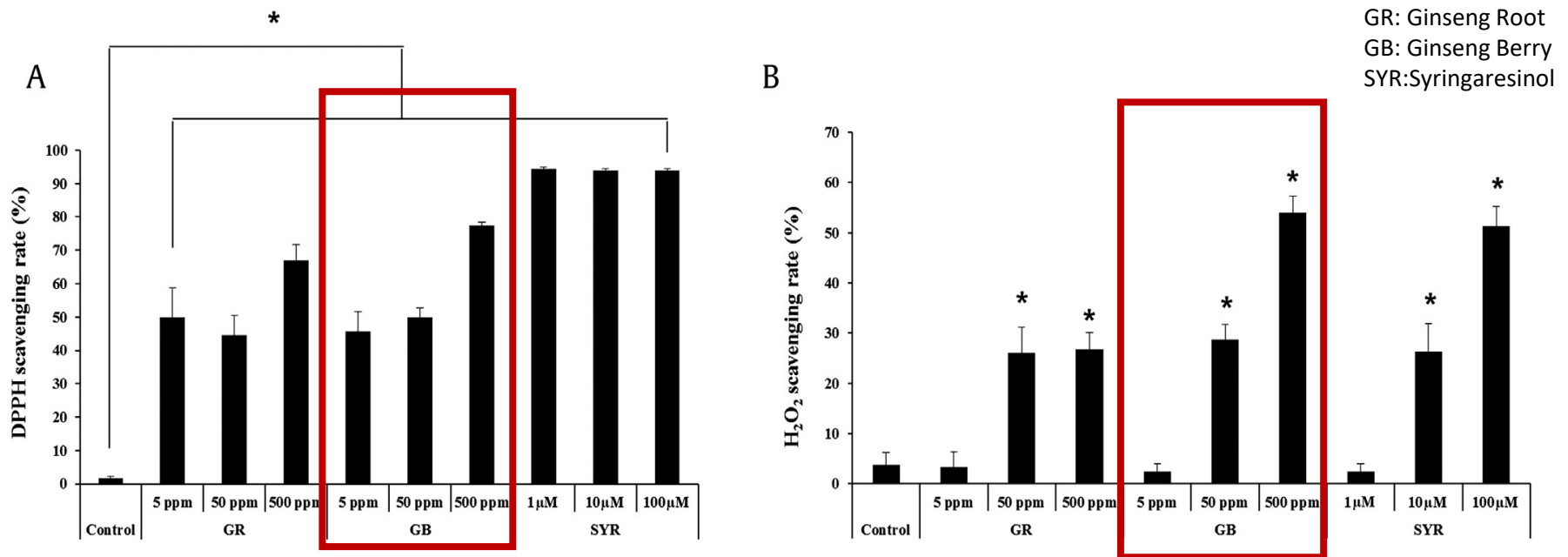


Fig. 3. Ginseng components have antioxidative activities. Ginseng root, ginseng berry, and syringaresinol have DPPH radical-scavenging activity (A) and H₂O₂ scavenging activity

(B). Data are presented as the mean SD. * $p < 0.05$ by two-tailed Student t test.

(해설) Fig. 3. 인삼성분은 산화방지 기능이 있다. 인삼뿌리, **인삼열매** 그리고 시린가레시놀은 DPPH radical-scavenging activity, H₂O₂ scavenging activity가 있음을 확인하였다.

Introduction of Our Peptide Product

BerryPEP : Reference

Effects of Korean ginseng berry on skin antipigmentation and antiaging via FoxO3a activation

J Ginseng Res 2017;41:277e283

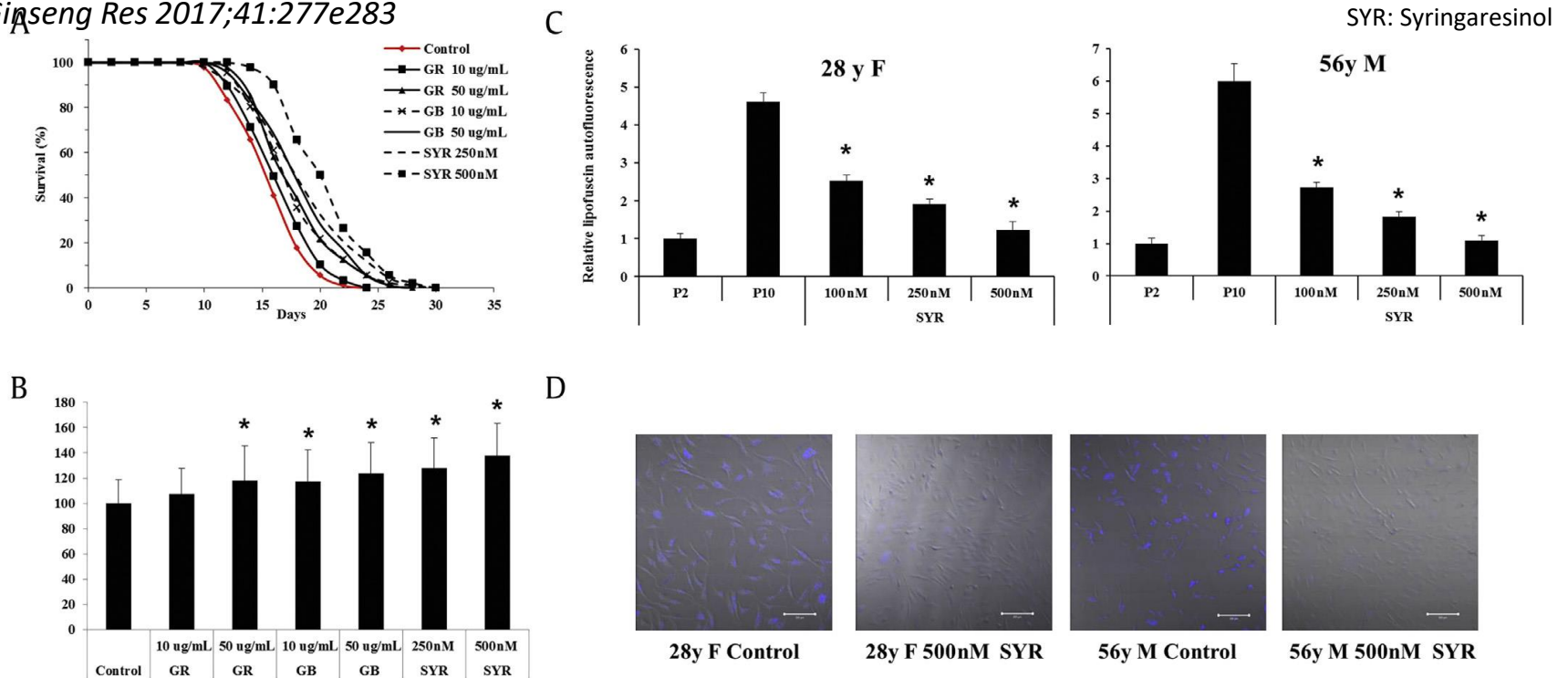


Fig. 5. Ginseng components have potent Anti-aging activity

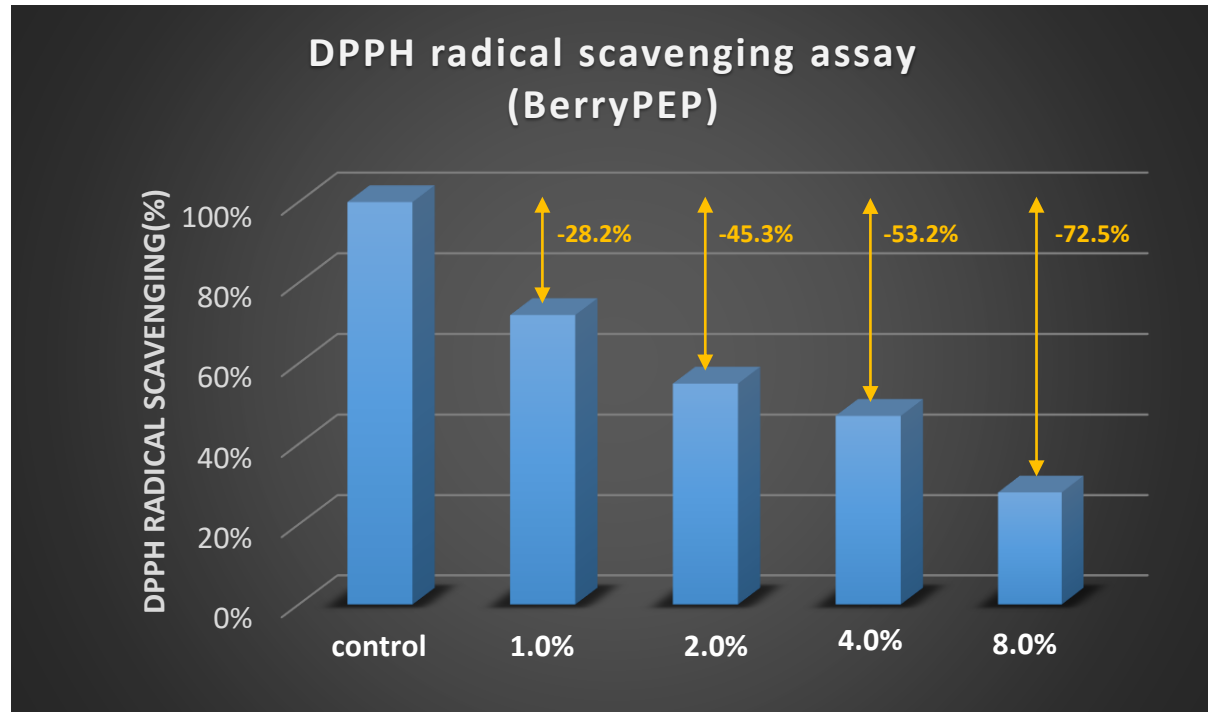
(A, B). induce a life span extension in the *Caenorhabditis elegans* wild type N2 strain. The survival curves (A) and the mean life span (B)

(C, D). Ginseng components decrease lipofuscin accumulation in passaged human dermal fibroblasts

(해설) Fig. 35 인삼성분은 안티에이징 효과가 있으며 *C.elegans*의 수명 연장 효과와 사람의 피부 세포 (fibroblast)에서 lipofuscin accumulation을 억제하여 Anti-aging 효과를 보인다.

Introduction of Our Peptide Product

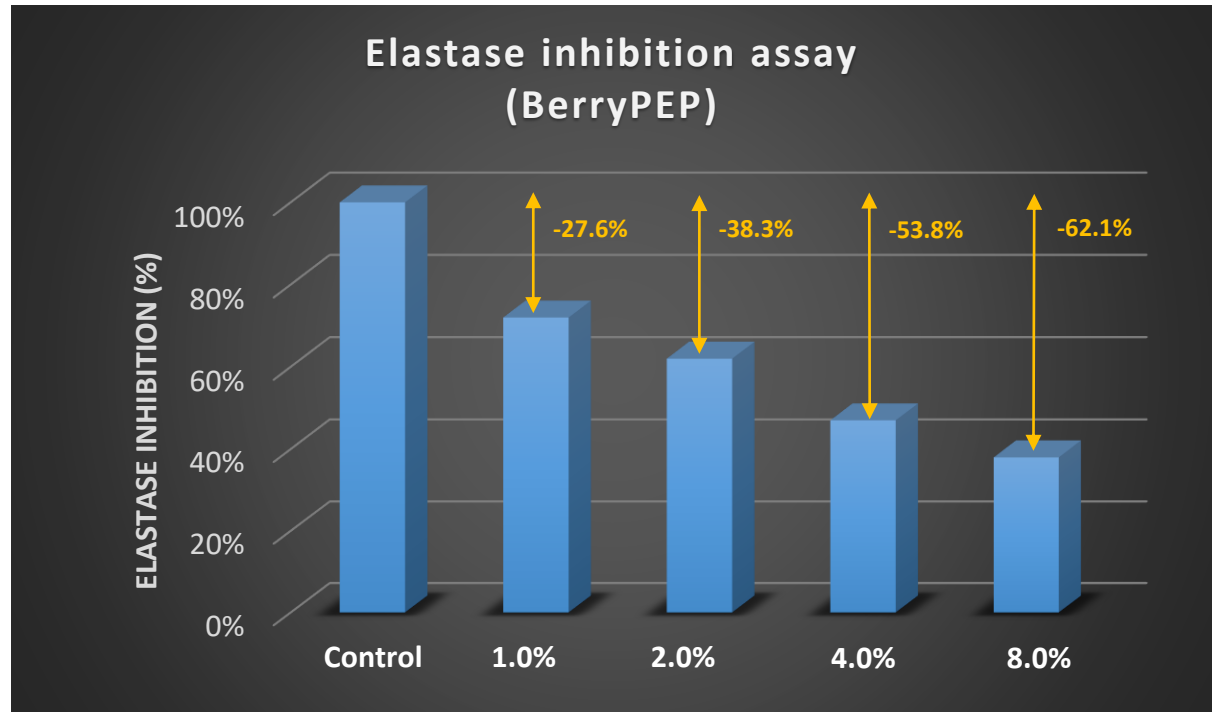
BerryPEP: Efficacy Test



BerryPEP has a concentration-dependent antioxidant effect, which is beneficial to the skin.

Tested by A&PEP Laboratory

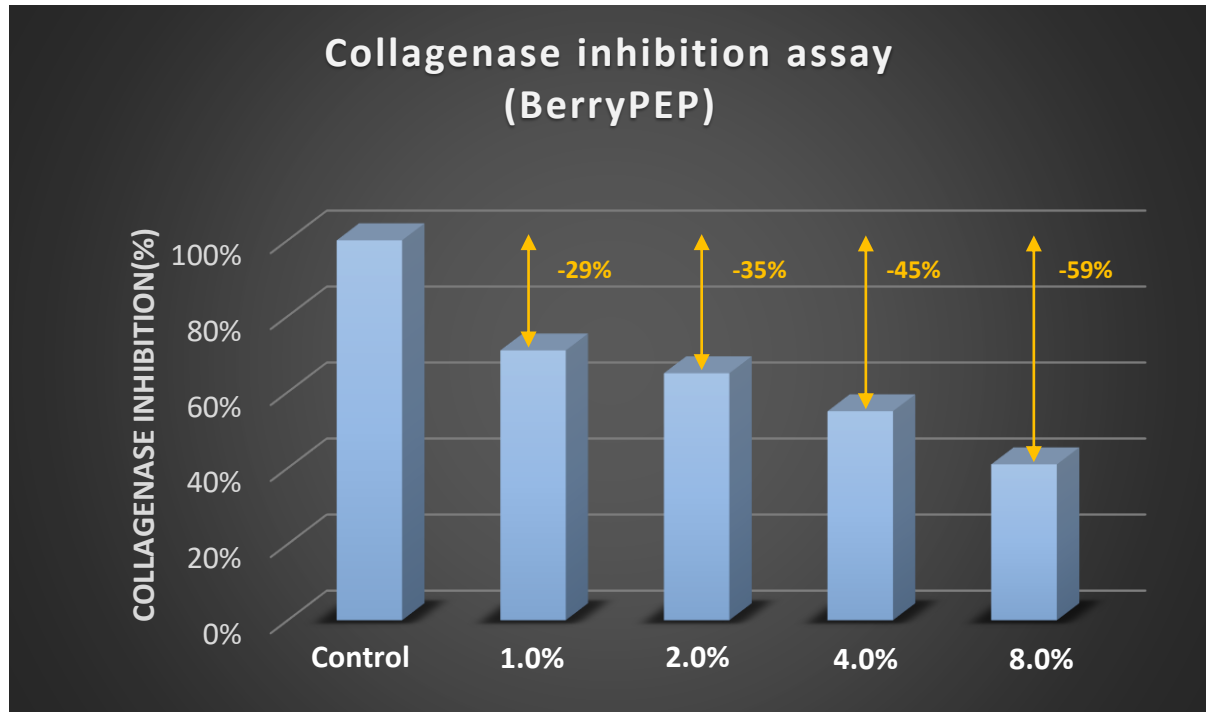
Introduction of Our Peptide Product



BerryPPEP has concentration-dependent elastase activity-suppressing effects
It is effective for wrinkle improvement and anti-aging.

Introduction of Our Peptide Product

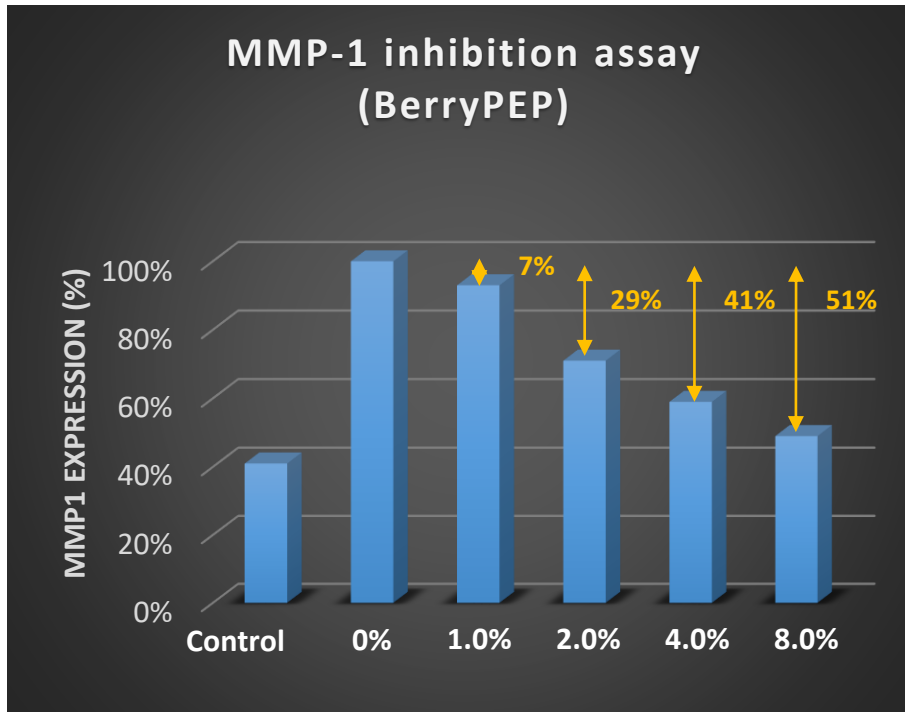
BerryPEP: Efficacy Test



BerryPEP has concentration-dependent collagenase activity-suppressing effects and is effective for wrinkle improvement and anti-aging

Introduction of Our Peptide Product

BerryPEP: Efficacy Test

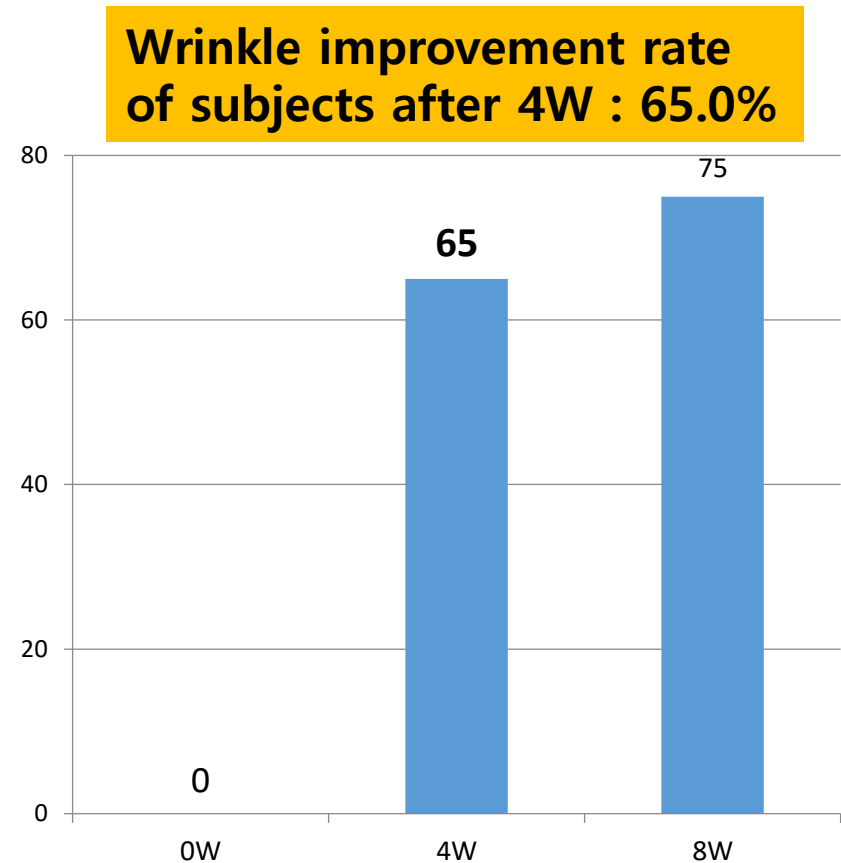


BerryPEP is effective for wrinkle improvement and anti-aging, which are concentration-dependently effective for MMP-1 activity suppression.

Introduction of Our Peptide Product

BerryPEP the simplified human body application test

- Ages : 40s – 50s
- Subjects : improving wrinkles around the eyes
- Periods : 8 weeks (checking in duplicate)
- Concentration:
 - Test group "applying BerryPEP 10% cream"
 - Control group "non-applying BerryPEP cream"
- Methods
 - 1) 8 weeks of clinical trial, using the product at least 5 times a week
 - 2) Using 7 times a week depending on skin age and wrinkles



Introduction of Our Peptide Product

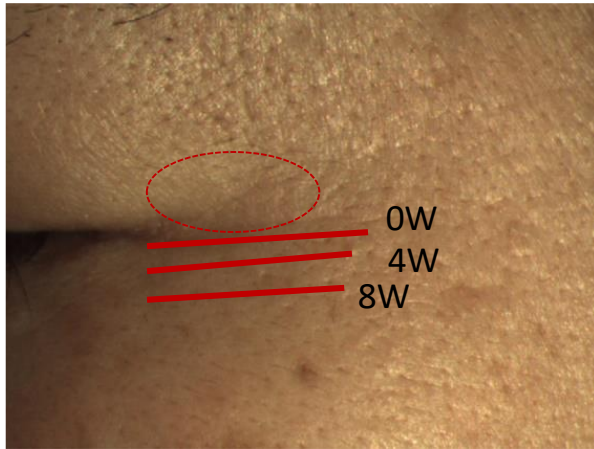
As a result of the simplified human body application test

0W

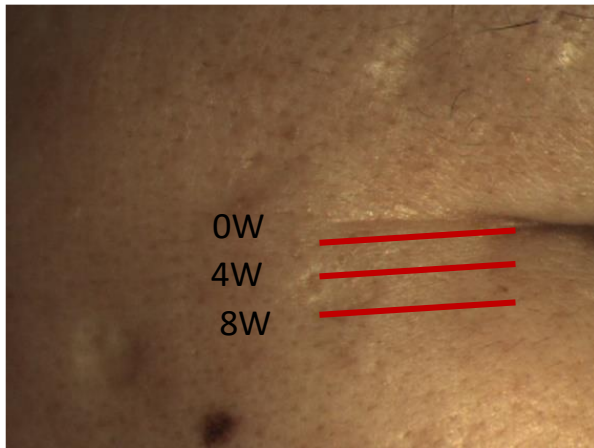
4W

8W

Test group



Control group



it is confirmed that BerryPEP improved the length and depth of wrinkles in the test group compared to the control group.
